

2024-2025

LUXURY LIVING

Reliving
Shanghai's
Vibrant History

Shanghai
Family
www.shfamily.com

Shanghai Family's 18th International SCHOOL EXPO 2024

ECO ART SHOW 2024秋季教育展 - 环保艺术节

Organizers: **Shanghai Family Parents Kids**

虎媽牛娃
HUMANITWA

Venue Sponsor: **Kerry Parkside**
浦东嘉里城

KERRY ON*



特别鸣谢 Participants



On October 19th, 2024, families in Shanghai gathered at Kerry Parkside to participate in Shanghai Family's 18th School Expo, co-hosted by Shanghai Family, Parents&Kids and HuMaNiuWa. The event integrated the school expo and eco art show, bringing a variety of educational information and live performances, attracting many families in Shanghai to participate.

The event attracted many established international schools, bilingual schools and kindergartens, who presented parents with valuable suggestions on international education. Parents sought professional advice and planning for their children's international education.





In this issue, we celebrate the glamour that Shanghai is known for. Recent art in the form of immersive theater and a TV show celebrates the city's vibrant history and gives the audience a taste of the heyday 1930s and the prosperous 1990s. (6) A look at the past shows us how the city of the present came to be.

Shanghai retains its enduring identity as the Pearl of the Orient with style and glamour. Modern-day residents can enjoy the array of high-end Serviced Apartments and Villas that truly provide all the amenities. (14) Or they can book a stay and be pampered at one of the many world-class Hotels that populate our city. (22)

Whether it is lodging, Dining (34), or Healthcare (8), Shanghai lives up to its name and offers a truly luxurious way of life.

We hope you enjoy this issue of **Luxury Living**.

Lynn Yen,
Executive Editor,
on behalf of the editorial team

LUXURY LIVING

www.shfamily.com

General Manager / Jenny Wu
总策划 / 吴东坤

Executive Editor / Lynn Yen
特约执行编辑 / 颜玲

Censor / Wan Lixin
特约审订 / 万里新

Designer / Zhu Dongmei
美术设计 / 朱冬梅

Photographer / Zheng Bin
摄影师 / 郑斌

Sales / Lorraine Hou, Fang Fang Hu
销售代表 / 侯琨, 胡芳芳

Production & Distribution Manager / Peihua Xu
印刷发行经理 / 徐佩华

Advertising Hotline

6875 0848

130 6176 1177

shadvertise@shfamily.com

Write to us at: editor@shfamily.com

Marketing team: marketing@shfamily.com

上海报业集团主管主办
国内统一连续出版物号: CN31-0062

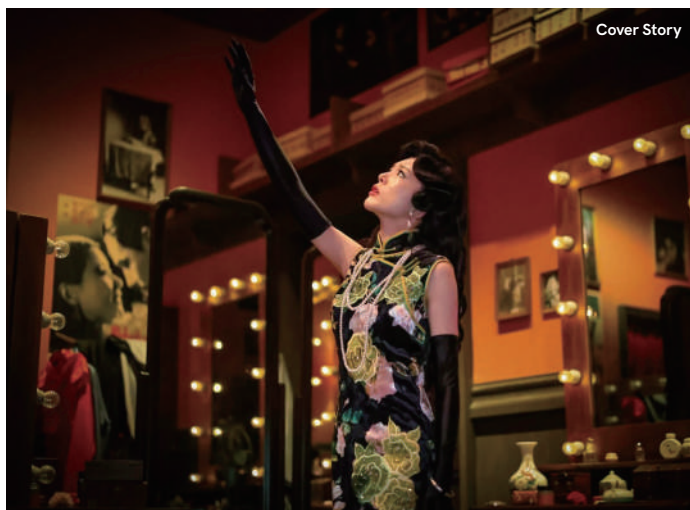
新民晚报 随报赠阅

Shanghai Xinmin Community Media Co. Ltd.
1801, 755 Weihai Road, Jing'an

上海新民社区传媒有限公司
上海威海路 755 号上海报业集团大楼 1801 室
电话: 6875 0848



Hotels



Cover Story



Serviced Apartments & Villas



Restaurants

CONTENTS

Stories

Reliving Shanghai's Vibrant History	6
-------------------------------------	---

Health

5 Reasons Why Breast Screening Matters	8
Jiahui International Hospital	
Healthy New Year's Resolutions	9
Parkway Health	

Serviced Apartments & Villas

Celebrating Community	12
Stanford Residences	
Listings	14

Hotels

Listings	22
J Hotel Unites Eastern and Western Cuisines	23
J Hotel Shanghai Tower	

Restaurants

Listings	34
----------	----

RELIVING SHANGHAI'S VIBRANT HISTORY

ART GIVES A TASTE OF THE GLAMOROUS PAST

By Lynn Yen



Shanghai is called the Pearl of the Orient and the Magic City, renowned for its elegance, glamour, and excitement. The fast-paced city has been a center of culture and business. Though it's a relatively young metropolis, Shanghai's spectacular rise and thrilling boom times have shaped the illustrious identity it holds today.

Last year saw two major productions capture the modern mind by traveling back in time to relive the landmark times. Last winter was the premiere of the hit television show *Blossoms Shanghai* set in the economic development of the 1990s. Later in the year came the opening of the immersive theater *SAGA City of Light*, which guides its audience through a story set in the Art Deco chic 1930s. Both are aimed primarily at a local audience with the Mandarin language performance of *SAGA City of Light* and Mandarin and Shanghaiese for *Blossoms Shanghai*.

SAGA City of Light is a choose-your-own-adventure theater that follows the growing popularity among modern Shanghai audiences of immersive entertainment like cult favorite immersive theater *Sleep No More*, puzzle-solving escape rooms, and role-playing murder mystery parties. The modern Shanghai audience loves to step into a new world.

Created by French production company Puy du Fou and located in suburban Xuhui, *SAGA City of Light* is massive in its world creation at over 12,000 square meters with more than 50 separate scenes and 130 actors. It can even boast the accomplishment of being recognized by Guinness World Records as the single largest theater show. The production debuted on May 28 and officially opened on September 26.

Guests play the role of newly graduated archaeology interns in the present day following the central male lead, archaeologist Jieming, as he is obsessed with finding the City of Light. After arriving at the





entrance, you meet the King who built and guards the secret city. The King transports the audience back in time to the 1930s and hijinks ensue.

The experience involves guests chasing their chosen storylines through the shikumen alleys of old 1930s Shanghai. You can experience plot points like being thrown into the back of a truck, stowing away on a riverboat, or talking your way onto a train. Guests are invited to participate in the action and the actors improvise to the responses provided.

The décor really sets the scene. You'll find yourself on the dancefloor of an Art Deco dancehall and a witness to a traditional Chinese wedding. The multi-sensory effects even go as far as the ground shaking. At 184 RMB for a ticket, it's a memorable experience. There is even an option for a pre-show dinner served for an additional fee in an elegant art deco restaurant while a qipao-clad singer performs classic songs of the era: "Ye Shang Hai," "Without You," and "Autumn Night."

Fast forward 60 years to 1990s Shanghai. The economy is roaring to life after economic reform and hope and promise fill the air. This is the setting

of the hit TV show *Blossoms Shanghai*, based on the book *Blossoms* by Jin Yucheng. Director Wong Kar-wai brings a lush aesthetic to his first TV show production, his signature visual style that is praised in his movies *Chungking Express* and *In the Mood for Love*. The story follows A Bao in this energetic time of financial opportunity as he chases business success. We follow him and his circle of mentors, lovers, and enemies as they navigate the fast lane of 1990s Shanghai life to a backdrop of Mandopop.

The nostalgia for the not-so-distant past is still clear in the memories of older generations, *Blossoms Shanghai* brought back energy of the 90s. It was the most streamed television series nationwide at the time it aired. The glamour of the Shanghaiese language series inspired many themed costume parties, as well as increasing tourist foot traffic to destinations like Huanghe Road near People's Park, Cathay Theater and the Fairmont Peace Hotel that feature in the show and are landmarks of the time. Prada even launched a capsule wardrobe collection with *Blossoms Shanghai* that features the wardrobes worn by one of the female characters, Lingzi.

If you've been bitten by the history bug and want more, there are also many knowledgeable guides that lead historical tours around the city that can answer questions. For example, Historic Shanghai leads English and Mandarin tours of notable neighborhoods, providing a walking history lesson on the buildings you pass. There are also highly rated people who offer tours on Trip Advisor aimed at tourists and introduce the city and its historical sites.

Whichever way you choose to dive back into Shanghai's history, the desire to celebrate the city's identity and relive the heydays endures in the present day.



5 REASONS WHY BREAST SCREENING MATTERS



Breast Imaging Exams

A breast imaging examination includes an automated breast ultrasound scan (ABUS) or mammography, which forms the foundation of early detection. For people under 40 years old, ABUS is a suitable breast imaging examination. Young women often have denser breast tissue, and using ABUS improves the detection rates and provides clearer imaging when mammography is less effective.

5 Reasons Early Screening Matters

1. Early detection of breast cancer significantly enhances long-term prognosis, often resulting in less extensive surgeries and better aesthetic outcomes.
2. The survival rates of breast cancer are better.
3. Reduced side effects. Early treatment usually requires less surgery and chemotherapy, reducing bodily harm.
4. Reduced medical costs. Compared with advanced breast cancer, treatment costs of early breast cancer are lower, reducing the patients' financial burden.
5. Psychological comfort. Regular screening brings psychological comfort to women and reduces fear and anxiety about the disease.



Dr. Grace WANG, MD
Deputy Chief of Jiahui Breast Institute

Women over the age of 20 should consider starting regular breast screenings. Breast screening is a simple and effective process, even for asymptomatic women. One of its key advantages is the ability to detect early signs of breast cancer. An early diagnosis not only enhances treatment options but also leads to numerous patient benefits, including reduced medical costs, less invasive treatment methods, and improved prognoses.

By performing self-exams and clinical exams, screenings can identify potential issues such as breast infections, benign and malignant tumors, and nipple abnormalities early on.

At the Jiahui Breast Health Institute, we emphasize the importance of regular breast cancer screenings, including both self-exams and clinical evaluations. Our comprehensive screening protocol, informed by our international medical team's expertise, prioritizes early detection. By committing to regular screenings, women can take proactive steps towards safeguarding their health and improving their outcomes.



Jiahui International Hospital
Address: 689 Guiping Road
Tel: 400 868 3000

HEALTHY NEW YEAR'S RESOLUTIONS

PLAN

As the Christmas season winds down and we look ahead to the New Year (with Chinese New Year just around the corner!), it's the perfect time to reflect and set new resolutions.

I'm a fan of lists, and what better time to make a fresh one than now? As a healthcare provider, parent, and member of the vibrant expat community in Shanghai, here are 12 healthy resolutions I suggest for you and your family.

1. Eat Smarter, Not Harder. Let's cut back on sugars and balance carbs with lean meats, fish, or plant-based proteins. If you're vegetarian, it's a great time to check your B12, Vitamin D, and iron levels. A nutritionist can help in making the best choices for your health.

2. Consider a Health Check-Up. New year, new goals! A health check-up is a fantastic way to start the year. Whether it's through health packages or a personalized consultation with your family doctor, early detection is key to maintaining good health.

3. Gut Health Matters. Your gut health plays a significant role in your overall well-being. A healthy digestive system is key for your immune function and energy levels. If you're over 50, remember that bowel cancer screening is an important part of preventive care.

4. Mental Health Matters Too. Taking care of your mental health is as important as your physical health. There's no shame in seeking help when you need it. Whether it's a psychologist, psychiatrist, or counselor, make mental health a priority in the year ahead.

5. Monitor Post-Celebration Health. After all the festive indulgence, it's time to check in. Keep an eye on your sugar and cholesterol levels after all the fun.

6. Women's Health Focus. Ladies, make sure you're up to date with mammograms and Pap

smears. Early detection can save lives, and these screenings are important proactive health care.

7. Sleep Matters. Set tighter controls on your sleep habits. Whether you're managing a busy work schedule or a growing family, good sleep is essential for overall well-being.

8. Exercise, for Everyone! Staying active is essential, and it's important to involve the whole family. Kids especially need outdoor playtime, so get outside and enjoy some fresh air together.

9. Eye Health. Time to get the family's eyes checked! From screen time to age-related changes, eye care is something everyone can benefit from.

10. Check Those 'Nibbles, Lumps, and Bumps'. Get any new or unexplained changes to your body checked out. Whether it's a mole, bump, or something that just doesn't feel right, don't wait. The earlier you address it, the better.

11. Weight Management. Now is the time to take action. Whether you need to lose, gain, or maintain weight, there's support available. Physiotherapists, sports medicine specialists, and dietitians can work with you to achieve health goals while managing any physical aches or pains.

12. Dental Health. Don't forget about your teeth! Poor oral hygiene and gum health can have a serious impact on overall health. Regular dental check-ups, proper brushing, and flossing are key to preventing issues like gum disease, which can affect your heart and other organs.

ACTION

This festive season, remember that the greatest gift you can give yourself and your loved ones is health. Let's make 2025 a year of well-being, energy, and longevity. Wishing you all a wonderful and healthy holiday season!

GOAL



Dr. Victoria King
Family Medicine
General Practitioner
**Parkway Gleneagles
Medical & Surgical
Center**



Quick Appointment

Shanghai Family's 18th International SCHOOL EXPO 2024

"Shanghai Family" International Arts Festival
2024秋季教育展 – “上海家庭”艺术节



特别鸣谢 Participants



On October 13th, 2024, families in Shanghai gathered at The Place to participate in Shanghai Family's 18th School Expo, co-hosted by Shanghai Family, Parents&Kids and HuMaNiuWa. The event integrated the school expo and eco art show, bringing a variety of educational information and live performances, attracting many families in Shanghai to participate. We prepared our latest magazines and gifts for families who came to the event.

The event attracted many established international schools, bilingual schools and kindergartens, who presented parents with valuable suggestions on international education. Parents sought professional advice and planning for their children's international education.





CELEBRATING COMMUNITY

STANFORD RESIDENCES SHOWS APPRECIATION TO RESIDENTS.



Halloween Resident Appreciation Dinner

Stanford Residences has a lot to celebrate. In 2025, the serviced apartment brand, developed by K. Wah Group, will celebrate its tenth anniversary. Since its conception, Stanford Residences has expanded to two prime locations in Xuhui and Jing'an Districts. A sister serviced apartment brand, CITTA Residences, was also opened near Suzhou Creek.



Stanford Residences Xu Hui



Stanford Residences Xu Hui

Stanford Residences recently took the opportunity to throw a Halloween party to bring residents together. The 2024 Autumn Resident Appreciation Dinner was held on October 26 at WYSH, the urban renewal project also developed by K. Wah Group located on Wuyi Road in Changning District.

The Halloween-themed party saw the littlest residents dress up in costumes and play yard games for prizes. A magician entertained the guests, while a DJ set the festive mood and everyone enjoyed the barbecue buffet. To make their international families feel at home, Stanford Residences regularly organizes such activities and celebrates holidays like Easter and Christmas with community events all throughout the year.

Since its establishment, the company has adhered to the philosophy "Where Enchanted Living Comes Together," emphasizing its commitment to creating high-quality serviced apartments. The high-quality features of Stanford Residences are reflected in the quality of the living environment, the meticulous butler service, the comprehensive range of supporting facilities, and its prime location.

The variety of room types also meets the needs of different guests. Stanford Residences Xu Hui's apartment unit sizes range between 160 - 523 sqm and is a charming blend of old and new Shanghai with large-scale malls like IAPM as well as historical neighborhoods nearby. Stanford Residences Jing'an's apartment

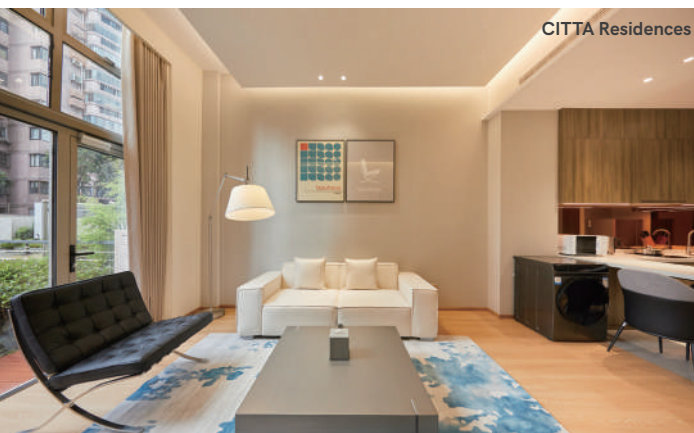


LUXURY LIVING

furnished, and the additional flexibility of short-term contracts to meet all types of needs.

The units are one and two-bedroom lofts, ranging in size from 80 to 200 sqm. Outfitted with facilities like fitness clubs and entertainment spaces, it is near UCCA Edge, a contemporary art museum. CITTA Residences is ideal for small modern families, working professionals, and art lovers. Keeping the needs of its target audience in mind, CITTA Residences also makes a point to hold community-building events such as themed activities for residents.

No matter which serviced apartment or location you choose, Stanford Residences or CITTA Residences, guests are sure to be looked after and made to feel at home with community celebrations along with high-quality service and design.



unit sizes range between 227 - 527 sqm and is located close to Jing'an Temple in the downtown area of Shanghai. The location of the two residences in bustling business districts caters to modern family living, and it also allows frequent traveler guests to quickly reach Shanghai's major high-speed rail stations and international airports.

Both apartments, Jing'an and Xu Hui, are equipped with luxurious clubhouses with gyms, indoor swimming pools, children's playrooms, and meeting rooms to meet the leisure and business needs of guests. They provide a 24-hour front desk service, three times weekly housekeeping service, and many other comprehensive services.

In addition to Stanford Residences, CITTA Residences at Heng Feng Road near Suzhou Creek is another serviced apartment brand launched in 2021 by K. Wah Group as a mid-to-high-end apartment living experience to meet the needs of a wider range of tenants. It aims to be a turnkey solution, with each room fully



Stanford
Residences
Official WeChat
account

Serviced Apartments & Villas

LUXURY LIVING





CITTA RESIDENCES HENG FENG

DESCRIPTION

Citta Residences Heng Feng has a total of 136 units and a variety of rental options for individuals in all stages of vibrant living. Leading a greener and finer lifestyle, Citta Residences creates open space for everyone who lives here to enjoy various social activities. Here, natural construction materials and ubiquitous plants make a perfect living environment with true peace and comfort.

FEATURES

A beacon of modern design, Citta Residences Heng Feng draws inspiration from its surrounding environment. Graced with modern artistic sensibility, the space balances the open space and convenience in every detail to provide a relaxed environment in the city.

A new level of smart living recognizing the importance of social connections and security, quality and convenience, Citta Residences Heng Feng brings you the utmost in smart living with innovative facilities and amenities and flexible living spaces.

LOCATION

Citta Residences Heng Feng is located at 18 Hengfeng Road in Jing'an District's new Shanghai Railway Metro Station Business Area, close to Suzhou Creek and Capital Square. Citta Residences connects you to everywhere you want to go in life. With easy access to metro lines 1, 12, and 13, this remarkable location links you to Shanghai's multi-dimensional transportation system, so you can travel within the city's vibrant core or venture to far-off locales.

FACILITIES

Curated shared spaces, Bar/Café lounge, Fitness center, Meeting rooms, Laundry rooms and other shared community facilities.

SERVICES

24-hour reception, 24-hour security and CCTV, Concierge, Welcome hamper, Parcel and message delivery, Information service, Express service, Emergency medical care, Laundry/dry cleaning, Themed activities, Taxi booking, Residents lounge, etc.



ADDRESS: 18 Hengfeng Road, Jing'an District
RENT RANGE: 16,000-40,000 RMB per month
UNIT SIZE: 84-204 sqm
TEL: (8621) 6317 7888
WEB: www.cittaresidences.com
MINIMUM LENGTH OF STAY: 1 Month




CITTA
 RESIDENCES
 臻逸



STANFORD RESIDENCES JING'AN

DESCRIPTION

One of Shanghai's leading high-end serviced apartments, Stanford Residences Jing'an provides the comfort of a private home with the added luxury of hotel hospitality. Apartments include three-bedroom with one study, duplexes and penthouses with generous living spaces.

The apartments have large lounge areas and spacious balconies. The interior décor is fun, with playful art deco influences that create modern and trendy living spaces. Practical concerns are also well-noted. The living area is furnished with the latest in-home technology and a fully-equipped kitchen with German kitchen appliances.

FEATURES

Individually controlled air conditioning, wireless internet, under floor heating, contemporary lighting, fully-equipped kitchens, German kitchen appliances.

LOCATION

Short walk to Jing'an Temple Station on line 2. Thirty-minute drive to Shanghai Hongqiao International Airport. One-hour drive to Shanghai Pudong International Airport.

FACILITIES

Gym, Indoor and Outdoor Swimming Pools, Sauna Room, Children's Play Room.

SERVICES

24-Hour Front Desk, Concierge, Messaging Services, Regular Housekeeping, Travel Advice, Neighborhood Orientation Tours, Monthly Activities, Residents' Events, Restaurant Reservations, Residence Permit Assistance.



ADDRESS: Tower 1, 3, 1999 Xinzha Road, Jing'an District
RENT RANGE: 56,000-170,000 RMB per month
UNIT SIZE: 227 - 527 sqm
TEL: (8621) 8023 6288
EMAIL: leasing.jingan@stanfordresidences.com
WEB: www.stanfordresidences.com
MINIMUM LENGTH OF STAY: 12 Months




**STANFORD
RESIDENCES**
—— 尚臻 ——



STANFORD RESIDENCES XU HUI

DESCRIPTION

Located in the heart of Shanghai's historic Xuhui District, Stanford Residences Xu Hui offers its residents excellent access to the city's transport system. There are 119 sets of luxury apartments including two-bed units, three-bed units, three-bed units with a study room, four-bed units with a study room, garden units and penthouse units. With "refined living" as a business philosophy, and following the design concept of "people-oriented", Stanford Residences Xu Hui combines modern style and functionality, with the aim of building an elegant and romantic living ambience that leaves one spellbound.

FEATURES

Individually-controlled air-conditioning, wireless internet, under floor heating, contemporary lighting, fully-equipped kitchen, German kitchen appliances.

LOCATION

Located in the heart of Shanghai's historic Xuhui District, the property offers easy access to the city's transport system and a wide range of shopping, dining and entertainment venues. There is convenient access to Yan'an Elevated Road and North-South Elevated Road, in addition to metro lines 9 and 12.

FACILITIES

Private Club House, Gym, Indoor and Outdoor Swimming Pools, Sauna Room, Reading Room, Common Room, and Children's Play Room.

SERVICES

24-Hour Reception, Concierge, Messaging Services, Housekeeping, Orientation Tours, Residents' Events, Laundry and Dry Cleaning, Restaurant Reservations, Residence Permit Assistance, Babysitting, Business Services, etc.



ADDRESS: Tower 7-10, 268 West Jianguo Road, Xuhui District

RENT RANGE: 45,000-140,000 RMB per month

UNIT SIZE: 160-523 sqm

TEL: (8621) 8030 2038

EMAIL: leasing.xuhui@stanfordresidences.com

WEB: www.stanfordresidences.com

MINIMUM LENGTH OF STAY: 12 Months



**STANFORD
RESIDENCES**
— 尚臻 —



SHANGHAI CENTRE

DESCRIPTION

Often called a city within a city, Shanghai Centre houses 365 serviced apartments, 30,000 sqm of prime office space, three levels of retail, a performance theatre and an exhibition space. The building was designed by renowned architectural firm John Portman & Associates, and marks their first in China.

The building has been a Shanghai landmark since it opened in 1990. Unsurprisingly, its residences, which include studios, one to four-bedroom apartments and luxurious penthouses, offer an unrivaled air of exclusivity and prestige.

FEATURES

Individually controlled central heating and air-conditioning system, brand appliances, open kitchen concept, drinkable water supply, ample closet space, separate shower cubicle in the master ensuite, complimentary high-speed internet, in-room safe, etc.

LOCATION

Situated in the heart of Shanghai's Jing'an District close to Yan'an Road, Shanghai Centre is walking distance from stations on metro lines 2, 7, 12, 13 and 14.

FACILITIES

Indoor and Outdoor Swimming Pools, Terrace Garden, Kids' Club, Meeting and Game Rooms, KTV Room, Reading Lounge, Golf Simulator, Basketball Court, Squash & Badminton Courts, Post Office, Supermarket, Medical and Dental Clinics, International Banks, ATM, Pharmacy, Massage, Beauty & Hair Salons, Storage Lockers, and Underground Parking.

SERVICES

24-Hour Security and Customer Service, International Management, Housekeeping, Access to the Ritz-Carlton Health Club, Weekly Resident Events, Laundry & Dry Cleaning, Tenant Discount Program, Photo Services, Postal Services, Shoe Repair & Key Service, Tailor & Alteration Service.



ADDRESS: 1376 West Nanjing Road, Jing'an District
RENT RANGE: 24,000-100,000 RMB per month
UNIT SIZE: 47-320 sqm
TEL: (021) 6279 8502
EMAIL: leasing@shanghaicentre.com.cn
WEB: www.shanghaicentre.com
MINIMUM LENGTH OF STAY: 1 Day
WECHAT ID: Shanghai-Centre1990



Shanghai Centre
 上海商城



SHANGHAI TIMES SQUARE SERVICED APARTMENTS

DESCRIPTION

Times Square Serviced Apartments is an up-scale serviced apartment located on Middle Huaihai Road. It offers a sophisticated home that meets top executives' discerning needs for a restorative respite from their demanding work schedules. The Wharf Group has deep experience in serving international clientele. The apartments provide attentive and thoughtful award-winning service, creating a homey environment for all residents. Times Square Serviced Apartments include everything from one-room units for couples or single occupants to three-room deluxe suites for bigger families. Timeless décor, tasteful furniture, well-equipped bathrooms and kitchens, with appliances sourced from around the world cater to the comfort of tenants of all ages and needs.

FEATURES

Smart IC card access system, wireless broadband connection, large screen TV with DVD player, international and local satellite TV.

LOCATION

Its central location means easy access to any part of Shanghai via Dashijie Station and Site of the First CPC National Congress - South Huangpi Road Station, both just a three to five minutes' walk, connecting to metro line 1, 8 and 14. Hongqiao Airport is a mere 20-minute drive on the Yan'an Expressway, while the metro will take residents to Pudong International Airport in only 30 minutes.

FACILITIES

Sauna and gym, outdoor swimming pool, lounge, tennis court*, carpark*

SERVICES

Multilingual concierge team, comprehensive 24-hour security, thrice weekly house-keeping service, thrice weekly linen and towel replacement, daily complimentary breakfast, newspaper and magazines, valet laundry services*

*Additional service for an extra charge



ADDRESS: 111 Middle Huaihai

Road, Huangpu District

RENT RANGE: 28,000-70,000
RMB per month

UNIT SIZE: 96-239 sqm

TEL: (021) 3122 8873 / 3122
8863

FAX: (021) 3122 8872

EMAIL: info@shtimesquare.
com,

vinisayu@shtimesquare.com

WEB: www.timesquareapart-
ments.com.cn

MINIMUM LENGTH OF STAY:
1 Month



Times Square
APARTMENTS
时代豪庭



THE EMERALD

DESCRIPTION

The Emerald is widely known as one of the most coveted addresses amongst the prime international villa compounds in Shanghai.

Within the compound, the villas are gateless and come with an open front yard, spacious back garden, high ceilings and large windows.

The Emerald's location offers both the convenience and excitement of city life, as well as tranquility and serenity of villa living.

FEATURES

Villas are fully furnished and equipped with a water filtration system, home alarm systems and fibred optic broadband connection.

LOCATION

The Emerald is situated in Pudong Kangqiao, adjacent to the Outer Ring Road, 26 km from Pudong Airport, and sitting between Shanghai Disneyland and the new Qiantan CBD.

FACILITIES

Fully-Equipped Clubhouse, Gymnasium, Aerobics Room, Indoor Swimming Pool, Tennis Courts, Football Fields, Children's Playground, Café Shop

SERVICES

24-Hour Security and Bilingual Call Center, Dedicated Asset Management Team, Garden and Pool Maintenance, Air Conditioning Maintenance, Regular External Wall and Window Cleaning and Pest Control, etc.



ADDRESS: 2888 Hunan Road, Pudong New Area
RENT RANGE: 35,000-80,000 RMB per month
UNIT SIZE: 200-750 sqm
TEL: (021) 6812 2222
FAX: (021) 6819 2898
EMAIL: marketing@shanghai-emerald.com
WEB: www.shanghai-emerald.net
MINIMUM LENGTH OF STAY: 1 Year



The Emerald
◆ 綠 寶 園 ◆



WILLOWBROOK AT GREENHILLS

DESCRIPTION

Escape from city crowds with a spacious five-bedroom villa at Willowbrook at Greenhills. These luxury villas offer not only generous living spaces within each unit, but also come with large private gardens set within an exclusive and secure compound.

Functional design features and details found within the villa interiors reflect the quality of these residences. Layouts maximize available space and ensure plenty of natural light. In the winter months, the residences are well-insulated from the weather with efficient energy features such as under floor heating and thermal windows.

FEATURES

Central heating and air-conditioning, under floor heating, thermal windows, wireless internet, centralised water purification systems, water filtration, natural gas fireplace, well-equipped kitchen, dishwasher, satellite TV.

LOCATION

Located in the Jinqiao Development Zone, next to many business and commercial hubs in Shanghai, Willowbrook at Greenhills is in close proximity to international schools in Pudong, a 20-minute drive from Lujiazui Financial District, and a walking distance to stations on metro line 2.

FACILITIES

Gym, Indoor and Outdoor Swimming Pools, Tennis Courts, Children's Playground, Convenience Store.

SERVICES

24-Hour Call Service, Maintenance and Repair Services, Community Services, Name Cards for New Tenants, Drinking Water Services.



ADDRESS: 418 East Jinxiu Road, Pudong New Area
RENT RANGE: 69,000-85,500 RMB per month
UNIT SIZE: 410-511 sqm
TEL: (021) 6856 8888
FAX: (021) 5030 2984
EMAIL: simon.xu@willowbrook.com.cn
WEB: www.willowbrook.com.cn
MINIMUM LENGTH OF STAY: 1 Year



WILLOWBROOK
AT THE GREENHILLS



Hotels

LUXURY LIVING

Photo: Hilton Shanghai City Center

J Hotel Shanghai Tower Unites Eastern and Western Cuisines for a Gastronomic Tour Above the Clouds

J Hotel Shanghai Tower is located atop the Shanghai Tower, the tallest skyscraper in China and third-tallest in the world. The hotel features seven distinctive restaurants and bars that offer the art of fine dining in the clouds. Each establishment has its own unique design and artistic décor, welcoming guests to enjoy spectacular views of Shanghai while feasting on diverse cuisines, fine wines and imaginative cocktails.



Heavenly Jin: A Global Gourmet Journey Above the Clouds

Located on the 120th floor in Shanghai Tower, 556 meters off the ground, the Heavenly Jin Restaurant is awarded as the "highest restaurant in the building". The restaurant gathers the essence of Jiangnan cuisine and focuses on the classic Huaiyang cuisine, making the traditional cuisine glow with new vitality. Diners at Heavenly Jin can also enjoy panoramic views of Shanghai through floor-to-ceiling windows.

Kinnjyou Inaka: Seasonal Cuisine and Sumptuous Décor

On Floor 104, Kinnjyou Inaka Japanese restaurant evokes a feeling of elegance. The restaurant specializes in Kaiseki and Teppanyaki. Each dining area offers a different view of the city, while the chefs perform live Japanese cooking techniques and present fresh and authentic Japanese cuisine.

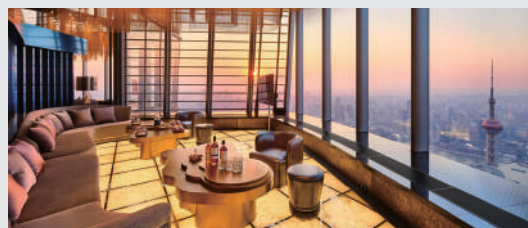


Jin Yan: Chinese Fine Dining and Culturally Rich Design

The Jin Yan restaurant serves authentic Cantonese cuisine. Featuring classic shades of Chinese red, the restaurant is a proud demonstration of the beauty of traditional Chinese craftsmanship. The entrance corridor is made from red glaze and takes inspiration from traditional Chinese architecture. Inside, a crystal art installation displays a dragon playing with a pearl. All these inviting diners into a refreshing environment with a feast for both the eyes and the palate.

Centouno: Unique Italian Cuisine above the City

Bask in the warmth of modern Southern Italian and Mediterranean ambiance while sampling gastronomic delights based on traditional and unpretentious recipes. The restaurant blurs the boundary between reality and the virtual with artwork from Edoardo Tresoldi. His ghostly architectural work fuses a large Roman wire-mesh dome within the environment, casting a dream-like atmosphere over the space.



Yi Lounge: A Trendy Nightspot to View the City After Dark

Yi Lounge is an exciting new addition to Shanghai's famous nightlife scene and a must-visit spot for guests. Experienced mixologists serve up wine, champagne, whisky and other spirits, as well as an original menu of cocktails accompanied by tasty snacks and refreshments.

The Soirée: Creating Wonderful Memories

The J Hotel Shanghai Tower boasts a 422-square-meter semi-circular Soirée Ballroom on Floor 105, which can be divided into two smaller fan-shaped spaces. It also offers an 86-square-meter boardroom and two multifunctional rooms at 38 square meters and 24 square meters, making it an ideal venue for high-end banquets, weddings, meetings and cocktail parties.



Photo: Hilton Shanghai City Center



HILTON SHANGHAI CITY CENTER

DESCRIPTION

Hilton Shanghai City Center marks the return of Hilton's flagship brand to the heart of Shanghai, blending rich cultural heritage with modern luxury. Located between the vibrant Jing'an and Changning Districts, the hotel fuses classic Shanghai architecture and contemporary design. Guests are welcomed with a true Shanghaiese experience, starting with personalized service and the scent of gardenia. This opening symbolizes Hilton's commitment to delivering exceptional hospitality in China, where the brand continues to expand its footprint.

FEATURES

Hilton Shanghai City Center embodies "At the Center of It All," seamlessly blending classic and contemporary design elements. Drawing inspiration from Shanghai's iconic old villas, the hotel's interior combines modern luxury with traditional Shanghaiese charm. Refined touches such as the original pipe organ enhance the hotel's heritage while providing guests with a unique atmosphere. The design uses muted tones, soft furnishings, and balanced layouts to create a calm and sophisticated ambiance.

LOCATION

The convenient location on Yan'an West Road offers easy access to major transport hubs, business districts, and iconic landmarks such as Jing'an Temple and People's Square. The hotel is perfectly placed for

guests to explore Shanghai's dynamic cultural offerings, including trendy retail hubs and historic streets like Yuyuan Road. Whether visiting for business or leisure, Hilton Shanghai City Center provides an ideal base for discovering the best of Shanghai.

FACILITIES

Hilton Shanghai City Center features 381 guest rooms and suites, offering guests a comfortable and stylish stay. The hotel boasts over 1,000 square meters of flexible meeting and banquet space, including a 432-square-meter pillarless ballroom. Guests can also enjoy a range of dining options, including Osteria Twelve 16 Italian Restaurant, and Executive Lounge. Other facilities include a well-equipped fitness center to provide an all-encompassing experience of relaxation and convenience.

SERVICES

Guests can enjoy personalized concierge service, high-speed Wi-Fi, and flexible check-in and check-out options. The hotel also offers 24-hour room service, valet parking, and laundry services. For business guests, the hotel provides state-of-the-art meeting and event facilities, complete with AV equipment and dedicated support staff. Additionally, Hilton Honors members enjoy exclusive benefits such as instant discounts, flexible payment options, and a range of digital services through the Hilton Honors app.



ADDRESS: 488 West Yan'an Road, Changning District
TEL: (021) 3211 9999
EMAIL: SHAMS_info@hilton.com
WEB: hilton.com.cn/shanghai-citycenter




Hilton
 SHANGHAI CITY CENTER
 上海城中希尔顿酒店



CONRAD SHANGHAI

DESCRIPTION

Conrad Shanghai marks the brand's first foray into the bustling metropolis, superbly located as a key landmark in the heart of People's Square, Shanghai's renowned tourism and business district.

FEATURES

Superbly located as a key landmark in the heart of People's Square, Conrad Shanghai's soaring tower offers unparalleled views of the East Nanjing Road commercial street, the Bund, and Pudong's iconic skyline.

LOCATION

Situated within walking distance to major transportation networks and metro lines, the hotel's prime location offers excellent accessibility to premium shopping malls, traditional local neighbourhoods, and popular attractions such as the Shanghai Museum, Shanghai Grand Theatre, Xintiandi, the Bund, and Yu Garden.

FACILITIES

With its impressive 66 floors and 728 luxurious rooms, Conrad Shanghai's soaring tower offers unparalleled views of the East Nanjing Road commercial street, the Bund, and Pudong's iconic skyline. Conrad Shanghai's selection of restaurants take guests on a culinary tour, from the Mediterranean seaside and the artisanal bistros of Paris to the banquet halls of China. Primed to host an array of memorable weddings and events of any scale in the center of the city, Conrad Shanghai offers over 2,000 square-meters of pillarless event space with views of East Nanjing Road. The versatile space includes an elegant 864 square-meter ballroom which can accommodate up to 600 guests, 13 meeting rooms, all of which feature state-of-the-art audiovisual equipment and food and beverage options.

SERVICES

Whether it's a personalized stay experience or exploring the essence of the destination, Conrad Shanghai is a landmark from which to inspire journeys.



ADDRESS: 789 East Nanjing Road, Huangpu District
TEL: (021) 3318 9999
EMAIL: conradshanghai.info@conradhotels.com
WEB: <https://www.hilton.com/en/hotels/shawsci-conrad-shanghai/>



CONRAD
SHANGHAI
上海康莱德酒店



HILTON SHANGHAI HONGQIAO



In the heart of the Hongqiao Business District, Hilton Shanghai Hongqiao is about 5 kilometers from Shanghai Hongqiao Airport and Train Station and 9 kilometers from the National Exhibition and Convention Center, easy access to Middle Ring Road and Yan'an Elevated Road, and close to metro line 2/9/10/15. It's also located in the core of Gubei Business District and Korean and Japanese communities. The hotel consists of 612 rooms, and more than 2,800 square meters of conference and banquet venues after renovation. Other amenities include an executive lounge, fitness center, swimming pool, spa, tennis court, open garden and restaurant.



ADDRESS: 1116 East Hongsong Road, Minhang District
TEL: (021) 3323 6666
EMAIL: SHASH_RES@hilton.com
WEB: shanghaihongqiao.hilton.com



J HOTEL SHANGHAI TOWER

J Hotel has debuted its inaugural property atop the Shanghai Tower, the tallest skyscraper in China and third-tallest in the world. J Hotel Shanghai Tower has reached a new milestone of success among China's homegrown hotels as it occupies the highest point in Shanghai. Jin Jiang International Hotels, China's largest and the world's second-largest hotel group, debuts the premiere luxury hospitality brand after dedicating ten years into its detailed curation, masterful craft, and opulent design. J Hotel weaves together broad influences from different realms of art and culture to bring a unique luxury perspective to Shanghai. It boasts 165 rooms, including 34 suites. The staterooms and suites are located from Floors 86 to 98 and vary from 62 square meters to 380 square meters, making them some of the highest and most spacious options in Shanghai.



ADDRESS: 126 Dongtai Road, Shanghai Tower, Pudong New Area
TEL: (021) 3886 8888
EMAIL: info@jhotel-shanghai.com
WEB: www.jhotel-shanghai.com





JING AN SHANGRI-LA, SHANGHAI



Jing An Shangri-La, Shanghai is located in the Jing'an Business District, one of Shanghai's most prestigious and fashionable business and commercial districts. The hotel sits on a network of public transportation and is also the prime focus of the Jing An Kerry Centre, the city landmark that encapsulates a lifestyle of affluence and vibrancy. A total of 508 guest rooms, ranging from 42 to 311 square metres occupy the top 29 floors of the 60-storey main tower, while restaurants, offices and retail shops are located on the lower levels. Offering diversity in the dining experience, guests have options at the hotel's six F&B outlets, serving both Western and Eastern cuisine. Other offerings of the hotel include the signature Chi, The Spa, a state-of-the-art health club, a 25-metre indoor natural light pool and 4,465 square metres of meeting and conference space.



ADDRESS: 1218 Middle Yan'an Road, Jing An Kerry Centre, West Nanjing Road, Jing'an District
TEL: (021) 2203 8888
EMAIL: sljn@shangri-la.com
WEB: www.shangri-la.com/shanghai/jing-an-shangrila

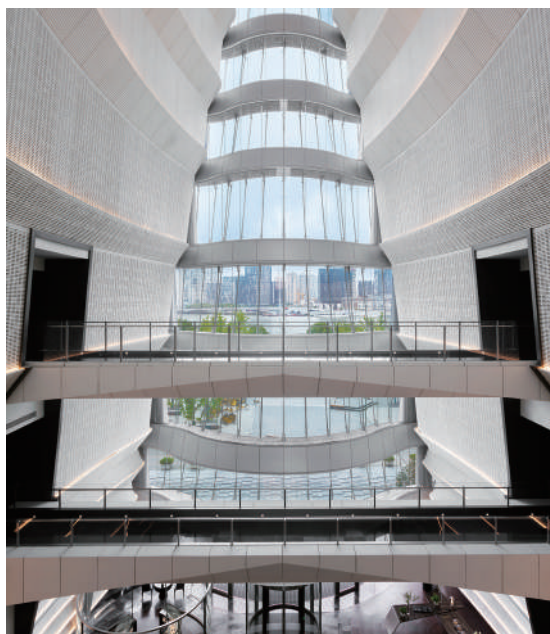


JW MARRIOTT MARQUIS HOTEL SHANGHAI PUDONG

JW Marriott Marquis Hotel Shanghai Pudong – The first JW Marriott Marquis Hotel in China opened in Shanghai in 2019. Located in Pudong beside the Huangpu River and near Lujiazui CBD, the hotel has 514 rooms, 3,200 square meters of meeting space and six outlets including an all-day dining restaurant, a Chinese restaurant, a specialty restaurant, a lobby lounge, a bar and a rooftop bar. The design is an innovative display of postmodern architecture that not only resonates with people's sensibilities but is also one with nature. This elegant hotel will deliver a new interpretation of understated luxury and cater to sophisticated, self-assured travelers seeking The JW Treatment. The specialty room "Family by JW", brings children and their parents an unforgettable time together, and "Mindful Room" combines healing, meditation, sound waves and fragrances to create an immersive and invigorating journey for the guests.



ADDRESS: 988 Puming Road, Pudong New Area
TEL: (021) 3809 8888
EMAIL: jw.shamj.gro@marriott.com
WEB: <https://www.marriott.com.cn/hotels/shamj-jw-marriott-marquis-hotel-shanghai-pudong/overview/>



KERRY HOTEL
Pudong, Shanghai
上海浦东嘉里大酒店

KERRY HOTEL PUDONG, SHANGHAI



Kerry Hotels appeals to the business traveler who prefers a vibrant and relaxed environment without compromising on service or quality. The hotels are contemporary in style and provide a seamless link between business, entertainment and recreation. Extensive leisure facilities are designed to be the social activity hub for both hotel guests and the local community. Soaring 31 storeys over the new Kerry Parkside complex in the heart of Pudong, Kerry Hotel, Pudong, Shanghai offers 574 guestrooms and suites, three restaurants, a lounge, a business center equipped with serviced offices and meeting rooms, 6,000 square meters sports club with a wellness day spa and indoor children's playground, as well as banqueting and conference venues, including a pillar-free ballroom. "In keeping with the Kerry Hotels brand DNA, we are all about creating memorable experiences, enabling our guests in seeking enjoyment and a balanced lifestyle," said Alexander Paul, the hotel's general manager.



ADDRESS: 1388 Huamu Road, Pudong New Area

TEL: (021) 6169 8888

EMAIL: shanghaiqiantan@shangri-la.com

WEB: <https://www.shangri-la.com/cn/brand/#Kerry>

Le **MÉRIDIEN**
SHANGHAI, MINHANG
上海闵行宝龙艾美酒店

LE MÉRIDIEN SHANGHAI, MINHANG

Conveniently located in Minhang District and the Hongqiao Hub, with its proximity to Qibao Ancient Town, shopping areas and metro stations, Le Méridien Shanghai, Minhang is an ideal gateway for discovering a distinctive blend of ancient and modern Shanghai in an inspiring setting. With over 2,500 square metres of multi-functional meeting space, 240 modern guestrooms, engaging events and signature programmes, the hotel offers stylish comfort and inspires La Vie – a lifestyle of savouring the good life.



ADDRESS: 3199 Caobao Road, Minhang District

TEL: (021) 5329 9999

WEB: lemeridienshanghaiminhang.com





MGM GRAND SANYA



MGM Grand Sanya, the flagship hotel of DMH Hospitality, seamlessly combines the rich cultural heritage of DIAOYUTAI with the vibrant entertainment DNA of the renowned MGM International Hotel Group. Situated in the picturesque Yalong Bay, Sanya, Hainan, the hotel sprawls across an impressive 108,000 square meters. Exciting leisure options abound, including thrilling activities like seaview zipline, land surfing, water sports, beach and pool parties, as well as an exhilarating water slide, catering to every vacationer's desires. Showcasing a unique fusion of Sanya's cultural essence and the dynamic spirit of Las Vegas, MGM Grand Sanya offers a top-tier hospitality experience that surpasses anything found in the city today, with its unmatched offerings in entertainment, dining, and nightlife.



ADDRESS: Yalong Bay National Resort District, Sanya, Hainan Province

TEL: (898) 8863 9999

EMAIL: reservations@mgmgrandsanya.com

WEB: www.mgmgrandsanya.com



PRIMUS RESIDENCE SHANGHAI HONGQIAO

Primus Residence Shanghai Hongqiao is an upscale service apartment of Greenland World Center Hotels. The apartment features 158 apartments, including one-bedroom apartments up to 40m², and three-bedroom apartments up to 170 m². It also features private gym and function rooms to meet various requirements for the customers.

Primus is an ideal luxury hotel that is located in the frontier of the city, which gives a balance for both business and leisure travelers in a stylish and urban retreat. With a modern and dynamic atmosphere, Primus provides unique freestyle services with a personality and an inspired attitude of luxury.



ADDRESS: No.188, Lane 1588, Zhuguang Road, Xujing Town, Qingpu District

TEL: (021) 3979 6888

EMAIL: resv.hongqiao@primushotels.com

WEB: www.gihg.com





PUDONG SHANGRI-LA, SHANGHAI



Pudong Shangri-La, Shanghai is located along the famous Huangpu River in Shanghai's vibrant Lujiazui financial district, and directly opposite the famous historical Bund. The hotel is walking distance to the Oriental Pearl TV Tower, SISEC and IFC Mall which establishes its reputable location. Guests can choose from the range of eight restaurants and bars that the hotel offers. They include the Chinese restaurant Gui Hua Lou, Jade on 36, a fine dining French restaurant which boasts its scenic view of the Bund, and the buffet restaurant YICAFE. The hotel has a full range of recreational and leisure facilities that include an indoor swimming pool, outdoor tennis court and two fully equipped state-of-the-art fitness centers, plus guests can rejuvenate their body and mind with a range of spa treatments at Chi, The Spa.



ADDRESS: 33 Fucheng Road, Pudong New Area

TEL: (021) 6882 8888

EMAIL: shanghai pudong@shangri-la.com

WEB: <https://www.shangri-la.com/shanghai/pudongshangrila/>



SHANGRI-LA QIANTAN, SHANGHAI

Opened in 2021, Shangri-La Qiantan, Shanghai celebrated its 2nd anniversary in October 2023. The hotel is located in the Qiantan Expo Area in Pudong. Together with Taikoo Li Qiantan and New Bund Centre, Shangri-La Qiantan, Shanghai forms a large international business district that integrates offices, retail, hotel and other functions. The design concept draws on elements of both Shanghai culture and "green nature", cleverly combining them to create a unique sensory experience. Shangri-La Qiantan, Shanghai offers a total of 585 guestrooms, four characteristic dining venues, over 2,000-square meter Wellness Club and over 6,000 square meters of conference and banquet space. Consummate facilities are ideal choices for the diverse desires of customers.



ADDRESS: 551 West Haiyang Road, Pudong New Area

TEL: (021) 5030 8888

EMAIL: shanghaiqiantan@shangri-la.com

WEB: <https://www.shangri-la.com/shanghai/qiantanshangrila/>



THE LANGHAM
SHANGHAI, XINTIANDI

THE LANGHAM, SHANGHAI, XINTIANDI



The Langham, Shanghai, Xintiandi welcomes you and your pet for an "Urban-Luxury Pet Friendly Getaway." You have everything you need to feel comfort at home with your beloved doggy. The pawcation program treats four-legged friends like VIPs, providing customized pet concierge service and amenities. Helpful amenities such as a special room sign, sofa bed, disposable pets' placement, pet stroller, water and food bowls. Cleaning supplies such as pick-up bags, disinfectant spray, odor elimination spray and cleaning gloves. Gourmet Doggilicious menu prepared by the culinary teams. All necessary measures are taken to ensure the safety and comfort of all guests and pets. Terms and Conditions: *Limited to 2 dogs per room, each weighing no more than 15kg and with a shoulder height of no more than 50cm. *An additional 1100 RMB per dog per night will be charged for this package.



ADDRESS: 99 Madang Road, Huangpu District

TEL: (021) 2330 2288

EMAIL: tlshx.resv2@langhamhotels.com

WEB: <https://www.langhamhotels.com/en/the-langham/shanghai/>



THE MIDDLE HOUSE
铺舍

THE MIDDLE HOUSE

The Middle House, located in the heart of Shanghai within bustling HKRI Taikoo Hui, the spirit of modern-day Shanghai is palpable through The Middle House's 111 modern studios, varying from 50 sqm to 90 sqm and a Penthouse - all influenced by celebrated architect Piero Lissoni's sumptuous and sophisticated interior design. The design draws inspiration from the city's rich heritage of craftsmanship and culture, marrying minimalist style with classical Shanghainese elements. Throughout the property, guests will find cultural touches and artwork inspired by Shanghai. The Middle House also features a 660 sqm top-floor Penthouse overlooking fashionable Nanjing West Road. For longer stays, The Middle House Residences are an ideal choice. Ranging from 55 to 110 sqm, they offer all the comforts and modern luxury of The Middle House, with the convenience of apartment-style living. The additional kitchen and laundry facilities provide convenience within the proximity of the hotel.



ADDRESS: 366 Shimen 1st Road, Jing'an District

TEL: (021) 3216 8199

WEB: www.themiddlehousehotel.com





THE RITZ-CARLTON SHANGHAI, PUDONG



Travel across the majestic Huangpu River and discover Pudong, the city's commercial and financial epicenter, and home to one of the finest luxury five-star hotels in Shanghai. Evoking the glamour of 1930s Shanghai in a modern tower in the Lujiazui finance zone, The Ritz-Carlton Shanghai, Pudong elevates every experience with a carefully curated touch, while offering luxurious services and amenities at every turn. Dining options include Jin Xuan, a Chinese restaurant awarded one Michelin star and one Black Pearl diamond. FLAIR, the highest iconic rooftop venue in Shanghai located on the 58th floor, and Scena di Angelo, the Italian restaurant consultive managed by Angelo Aglianó, an Italian Michelin-starred chef with over 20 years of experience. Pamper yourself at The Ritz-Carlton SPA Shanghai, Pudong, which has been recognized for seven consecutive years as a Forbes Travel Guide Five-Star Spa.



ADDRESS: 8 Century Avenue, Shanghai ifc, Lujiazui, Pudong New Area
TEL: (021) 2020 1888
EMAIL: jane.song@ritzcarlton.com
WEB: www.ritzcarlton.com/Shanghai-Pudong



WALDORF ASTORIA SHANGHAI ON THE BUND

Waldorf Astoria Shanghai on the Bund is the first Waldorf Astoria to exist outside of the United States. Located at the heart of the celebrated Bund, one of the most photographed postcard scenes of the city, Waldorf Astoria Shanghai on the Bund mixes the history and culture of the surrounding districts with a taste for 21st century sophistication. The hotel comprises of 260 guest rooms and suites across two buildings: a newly built modern tower connecting to an all-suite Heritage Building which was once the legendary Shanghai Club. Built in 1911, this Neo-Classical architectural gem steeped in history has been painstakingly restored using archival photographs and records whilst equipping it with contemporary luxuries for modern-day travel experiences, truly making this landmark hotel the preferred choice for the well-heeled global traveler.



ADDRESS: No.2 East Zhongshan 1st Rd, Huangpu District
TEL: (021) 6322 9988
EMAIL: SHAWA.PR@waldorfastoria.com
WEB: <https://www.hilton.com/en/hotels/shawawa-waldorf-astoria-shanghai-on-the-bund/>



Restaurants

LUXURY LIVING





CHILI'S CAFE & BAR

CHILI'S NEW BRANCH: DREAM CENTER & CHAMTIME

Chili's®, a popular American-style cafe and bar, opened a new store in Dream Center & Chamtime, providing customers with a relaxed gathering space.

Chili's® provides guests with a smooth transition from morning coffee to a rich selection of evening cocktails, offering the perfect experience for "Coffee to Cocktails".

Sit outside Chili's® during the day and bask in the autumn sunshine while enjoying a chocolate lava cake with coffee, savoring the sweet moment. Savor Chili's® signature Presidente Special® Margarita under the refreshing evening breeze and toast to every beautiful moment in life!

Chili's® offers Tex-Mex cuisine with fresh, high-quality ingredients including Hand-Smashed Burgers to lock in flavor, Baby Back Ribs that are smoked low and slow in-house over pecan wood, Full-On Sizzling Fajitas that can make any head turn and the famous Molten Chocolate Cake as well as a variety of hand-shaken signature margaritas served daily for lunch and dinner.

Whether it's hanging out with friends, romantic dates, or family gatherings, Chili's® can provide a full-time dining experience for you to enjoy every moment of joy.

ABOUT CHILI'S®

Hi, welcome to Chili's! We're a leader in the casual dining industry and the flagship brand of Dallas-based Brinker International, Inc. (NYSE: EAT). We take our food seriously - but not ourselves - because dining out should feel like a celebration even if there is nothing to celebrate. Our passion is making every guest feel special, and every day, our ChiliHeads make it their job to spread #ChilisLove across our more than 1,600 restaurants in 31 countries and territories.



chili's
CAFE & BAR
EST. 1975



BINJIANG: 3072 Riverside Avenue, Pudong New Area
TEL: (021) 5835 8035

CHAMTIME PLAZA: No.172, 1F, No.6 Changtai Plaza, 1181 Zuchong Road, Putuo District
TEL: (021) 178 2176 5788

DAXUE: 110 University Road, Yangpu District
TEL: (021) 157 2158 0720

GATE M DREAM CENTER: No.122, 1F, No.10, 2266 Longteng Avenue, Xuhui District
TEL: (021) 158 0179 9391

HONGSHOUFANG: Rm.116, 1F, No.2, Lane 236, Sinhui Road, Putuo District
TEL: (021) 187 1797 8398

JIUGUANG: B244, Daning SOGO, 2188 Gonghexin Road, Jing'an District
TEL: (021) 6306 5326

TONGREN: 152 Tongren Road, Jing'an District
TEL: (021) 6229 9331

WEB: <https://chilis.com>



2025 STUDENT VOICES

Speech Competition 演讲比赛



Green Walks Future Talks

绿行城市 共话未来



详情请扫码
咨询官微